

livespace

design • build • experience

INTERIOR  
PORTFOLIO HIGHLIGHTS

# Who Are We

Livespace is a design agency with over a decade of international experience in design, luxury fitout, project management and experiential marketing which is split into multiple divisions



Design & Creation  
Mood Board  
Authority Approval  
Decor  
Value Engineering  
Construction  
MEP Services  
FF&E



Design & Build  
Event Production  
Concept Creation  
Road Show  
Brand Activation  
Mall Activation & Kiosk  
Storage & Rebuild  
Photography & Videography



Interactive Applications  
Digital Retail  
3D Projection Mapping  
Augmented Reality  
Virtual Reality  
Holographic Technology  
LED Technology  
Content Creation



3D Printing  
Advanced Printing Technology  
Digital Signage  
Billboards  
Hoardings  
Light Boxes  
Acrylic Molding  
Popup & Rollup



## Major Commercial Projects

S.No.	Project Name	Client
1	Apple Store in Store - The Dubai Mall	Apple
2	Palm Marina Office	Nakheel
3	Abu Dhabi Cricket Stadium VIP Lounge	Abu Dhabi Cricket Stadium
4	SATA Office	Sharjah Airports
5	Arada Sales office -Dubai Festival City Mall	Arada
6	Lock Stock & Barrel - Partial fit-out @ Millenium Hotel	Broadway Interiors
7	Crown & Creek Bar F&B	British Council
8	Flynas Airline Dubai HQ - Emarat Atrium SZR	Flynas Airline
9	Padel Point Consultancy @ Ajman City Center	Padel Point
10	Federal Authority For Identity And Citizenship Ajman	UAE Federal Government
11	Queensland Trade Office-Dubai South HQ	Australian Consulate
12	University of Birmingham Auditorium	University of Birmingham
13	FAM Properties Office	FAM Properties
14	Adchem Jafza Office	Adchem
15	Rheem Innovation Center - DSO LIU	Al Shirawi Group
16	Isculpt Fitness Center - Meyan Mall	Isculpt Fitness
17	Noblessa Kitchen Showroom - Indigo Center Mall	Al Essa Group
18	Audemars Piguet Sales Experience - Al Serkal Avenue	Audemars Piguet
19	Padel Point (Al Quoz, Ras Al Khor & Ras Al Khaimah)	Padel Point
20	Natixis DIFC Office-ICD Brook Field	Natixis Middle East Limited
21	Easa Salah Al Gurg Tobacco Office	Easa Saleh Al Gurg Group
22	Gluckspilz F&B - The Pointe Mall	Gluckspilz
23	Astoria Junction Bar & Restaurant - Astoria Hotel	Private Client
24	CuisinePlus Showroom Abu Dhabi	Al Essa Group
25	Bold Interiors Showroom - Indigo Center Mall	Bold Interiors

### Major Commercial Projects

S.No.	Project Name	Client
26	Tiffany & Co. - Outdoor Sales Experience @ The Address Dubai mall	Tiffany & Co.
27	Delicut @ DIFC Mall	Delicut
28	Coffee Island @ DIFC Mall	Coffee Island
29	Boucheron @ Manarat Al Saadiyat Mall	Boucheron
30	Fujisoft HQ - AW Rostmani Building	Fujisoft
31	Ixina Showroom	Al Essa Group
32	Infosys Dubai HQ	Infosys
33	Easa Saleh Al Gurg Tobacco JAFZA Warehouse	Easa Saleh Al Gurg Group
34	Nolte Kuchen Showroom	Al Essa Group
35	Faham Doors Showroom	Faham Doors
36	Savia Perfume - AW Rostmani Building	Savia Perfume
37	Fractal Systems Innovation Center - IMPZ	Fractal System
38	Indian Embassy Refurbishment	Consulate General of India
39	Canon Showroom - Al Ghazal Mall	Canon
40	Nisnass Sales Experience - Inked dubai	Inked
41	National Bank of Oman	National Bank of Oman
42	The Gift Wrap Boutique - Khawaneej Mall	The Gift Wrap



## BOLD Experience Center

### Client

Bold Interiors

### Area

5300 sq.ft.

### Location

Sheikh Zayed Rd, Dubai

### Scope of Work

Design and Build  
Fitout  
MEP Services  
Joinery works  
AV & IT Integration  
Authority Approvals

### Duration of Completion

45 Days









# Nolte Kuchen Showroom

## Client

Universal Group Holding

## Area

5200 sq.ft.

## Location

Shaikh Zayed Road, Dubai

## Scope of Work

Design and Build  
Fitout  
MEP Services  
AV & IT Integration  
Civil works  
Authority Approvals

## Duration of Completion

60 Days









# THG Paris Dubai HQ

**Client**

THG

**Area**

3500 sq.ft

**Location**

D3, Dubai

**Scope of Work**

Design and Build

Fitout

MEP Services

AV & IT Integration

Civil works

Authority Approvals

**Duration of Completion**

30 Days





# Talabat Restaurant

## Client

Talabat

## Area

8500sq .ft

## Location

City walk, Dubai

## Scope of Work

Design and Build  
Fitout  
MEP Services  
AV & IT Integration  
Civil works  
Authority Approvals

## Duration of Completion

45 Days





# Apple Store in Store

## Client

Apple

## Area

1000 sq .ft

## Location

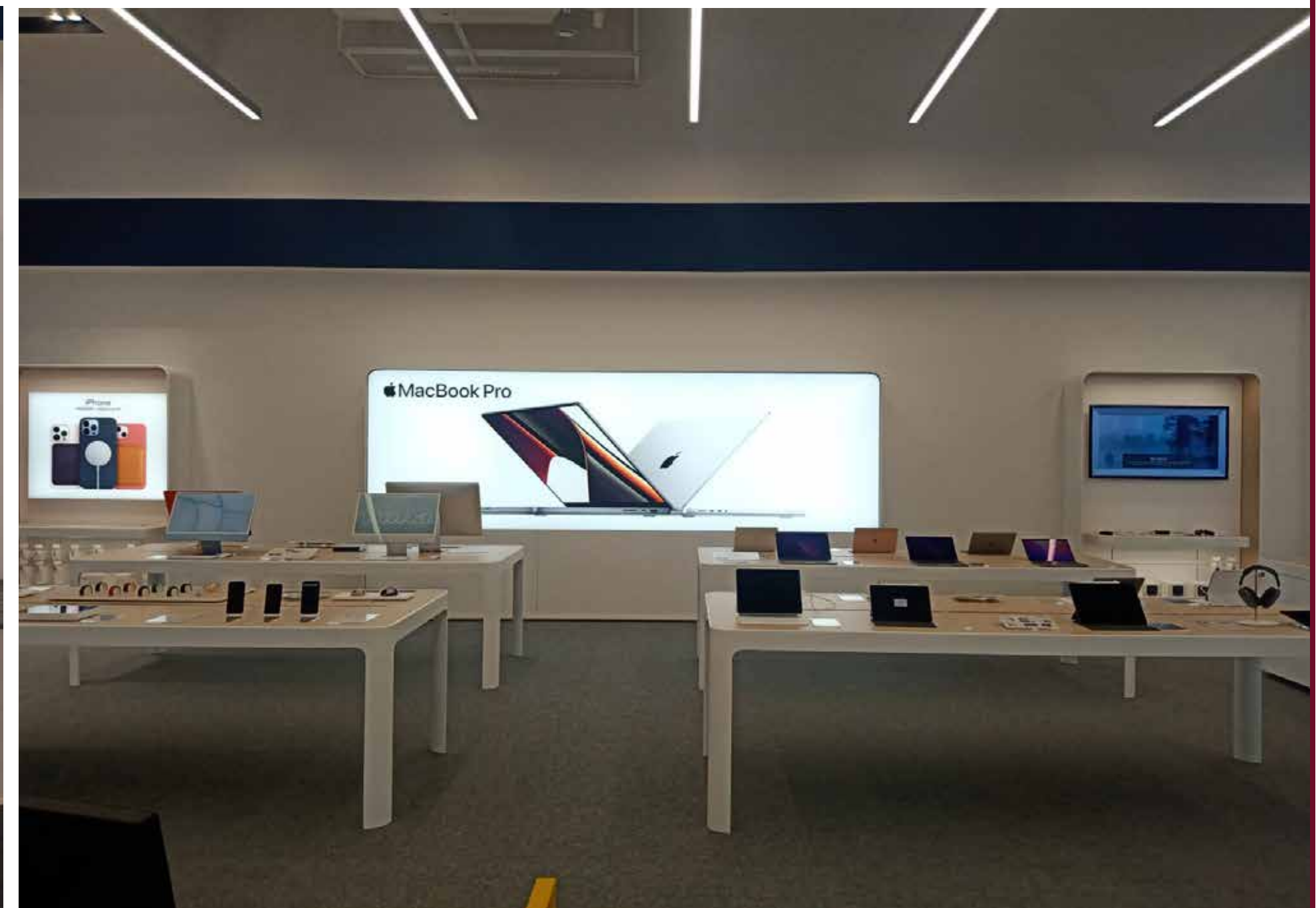
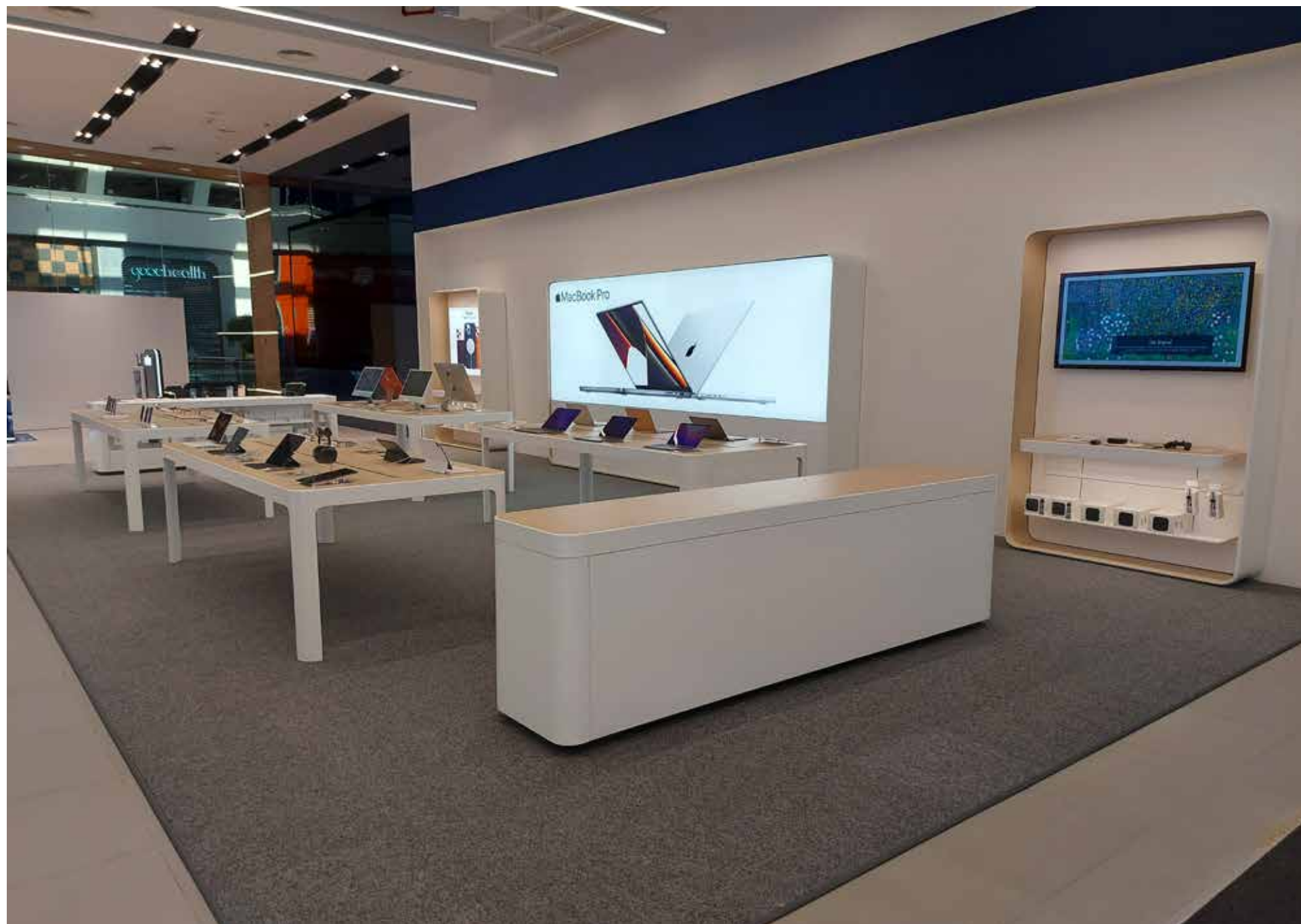
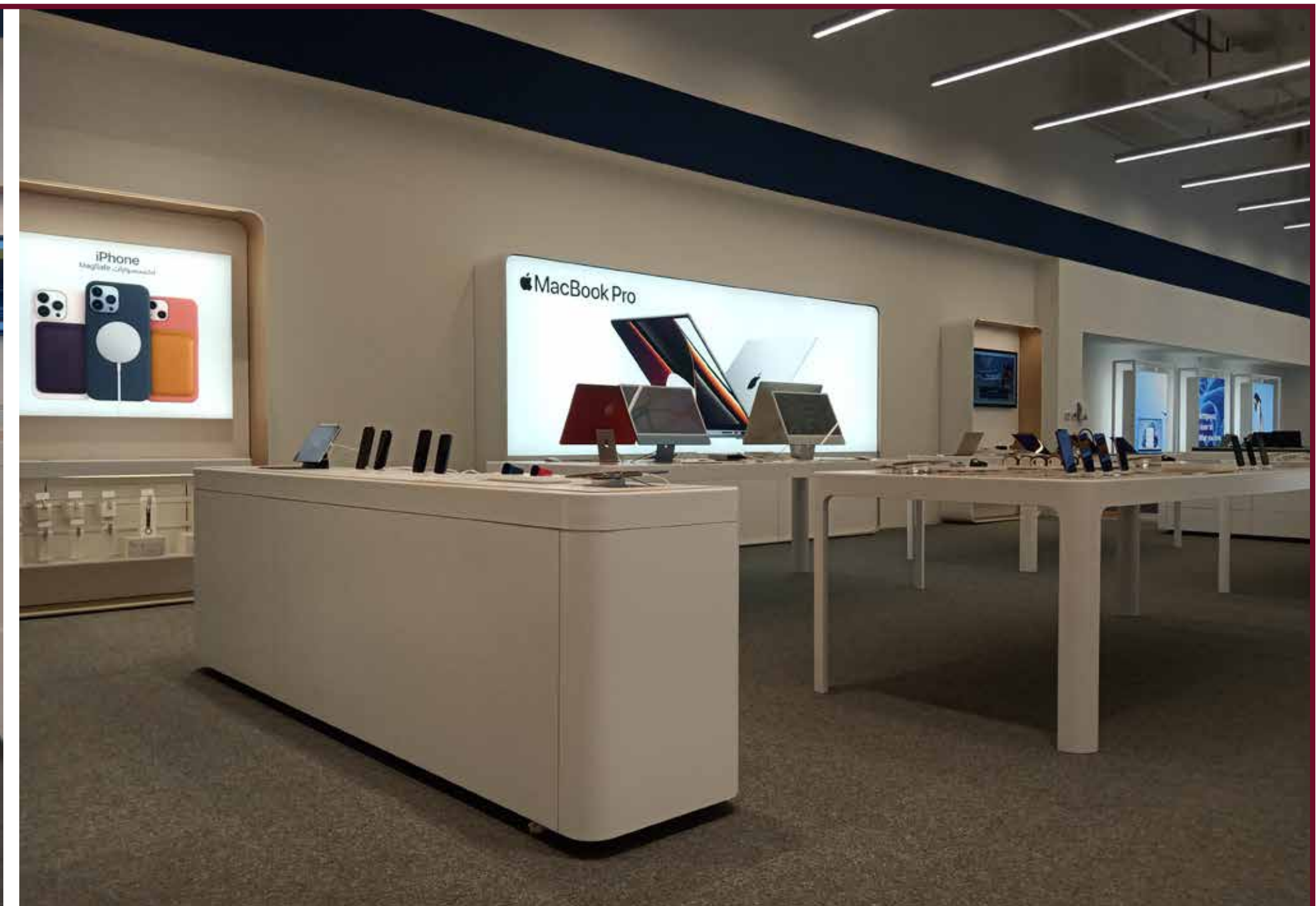
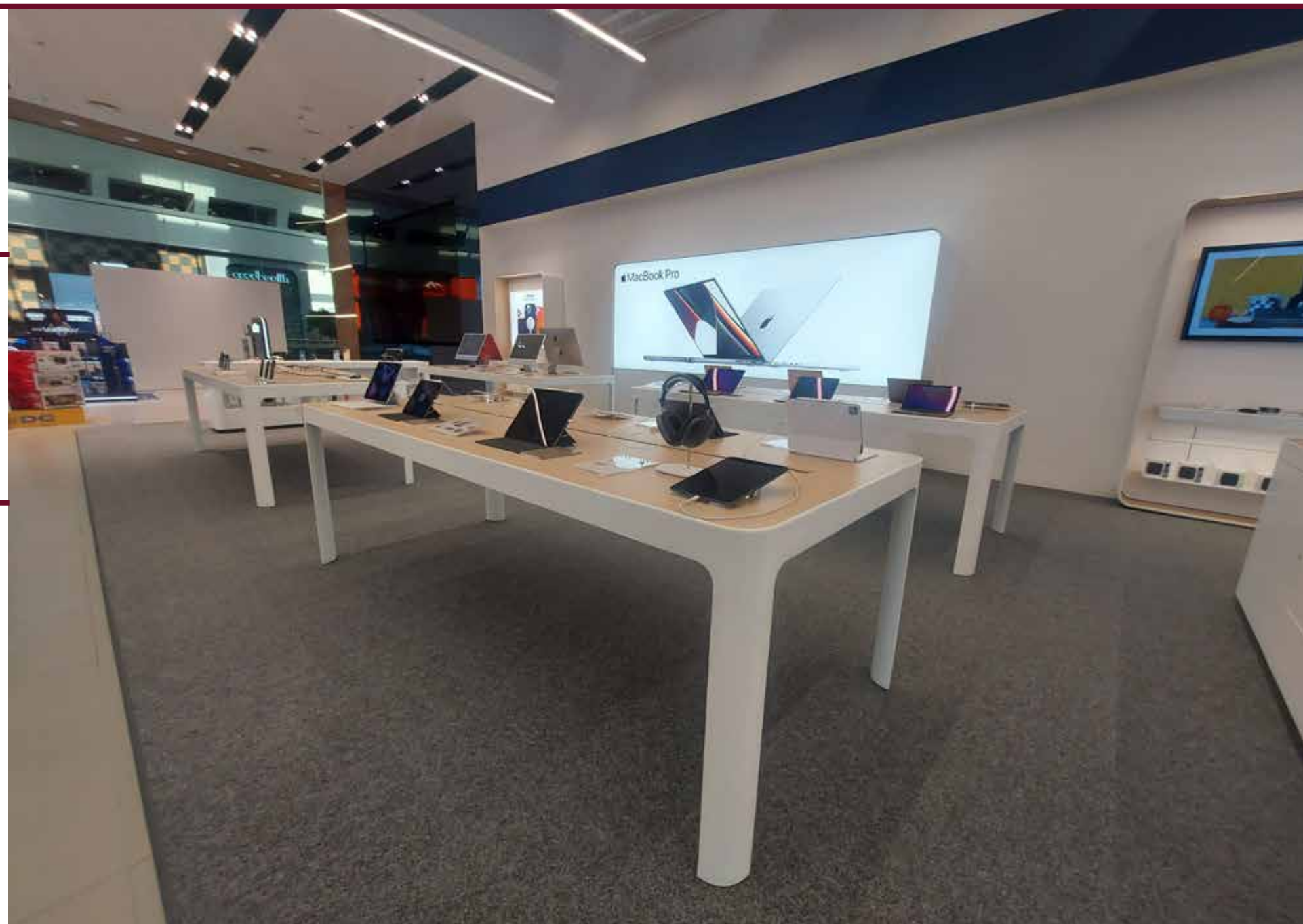
The Dubai Mall, Dubai

## Scope of Work

Build  
Fitout  
MEP Services  
AV & IT Integration  
Authority Approvals

## Duration of Completion

7 Days





# Savia Perfumes

## Client

Savia Perfumes

## Area

8500 sq.ft.

## Location

Burjuman, Dubai

## Scope of Work

Design and Build  
Fitout  
MEP Services  
Joinery works  
AV & IT Integration  
Authority Approvals

## Duration of Completion

35 Days





# Cuisine Plus Showroom

## Client

Al Essa Group

## Area

8900 sq.ft.

## Location

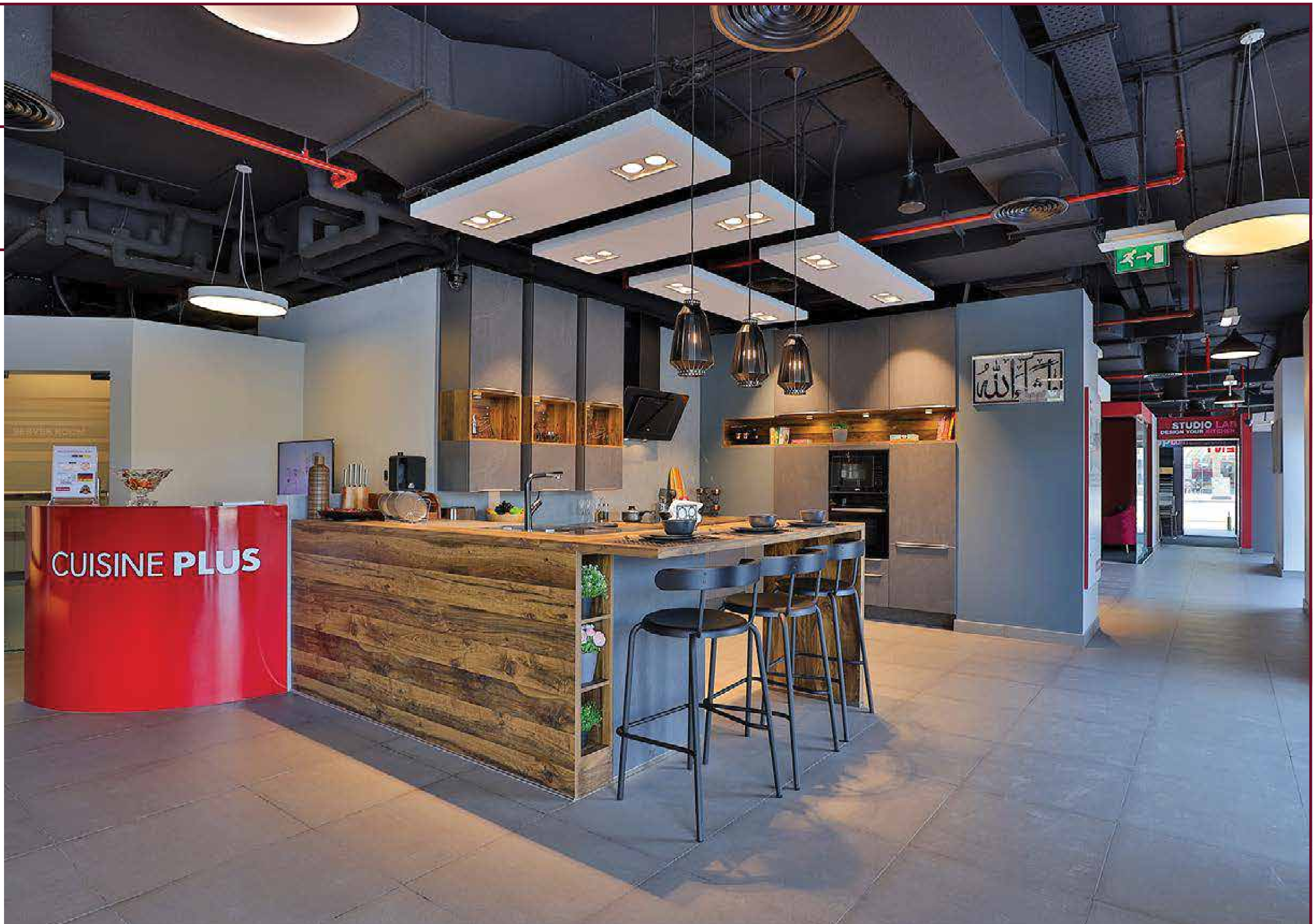
Abu Dhabi

## Scope of Work

Design and Build  
Fitout  
MEP Services  
AV & IT Integration  
Civil works  
Authority Approvals

## Duration of Completion

60 Days









# GLÜCKSPILZ The Pointe

**Client**  
GLÜCKSPILZ

**Area**  
4300 sq.ft.

**Location**  
The Palm Jumeirah

**Scope of Work**  
Design and Build  
Fitout  
MEP Services  
Joinery works  
AV & IT Integration  
Authority Approvals

**Duration of Completion**  
45 Days





# Padel Point Ras Al Khor

## Client

Padel Point

## Area

20,000 sq.ft.

## Location

Ras Al Khor, Dubai

## Scope of Work

Design and Build

Fitout

MEP Services

Joinery works

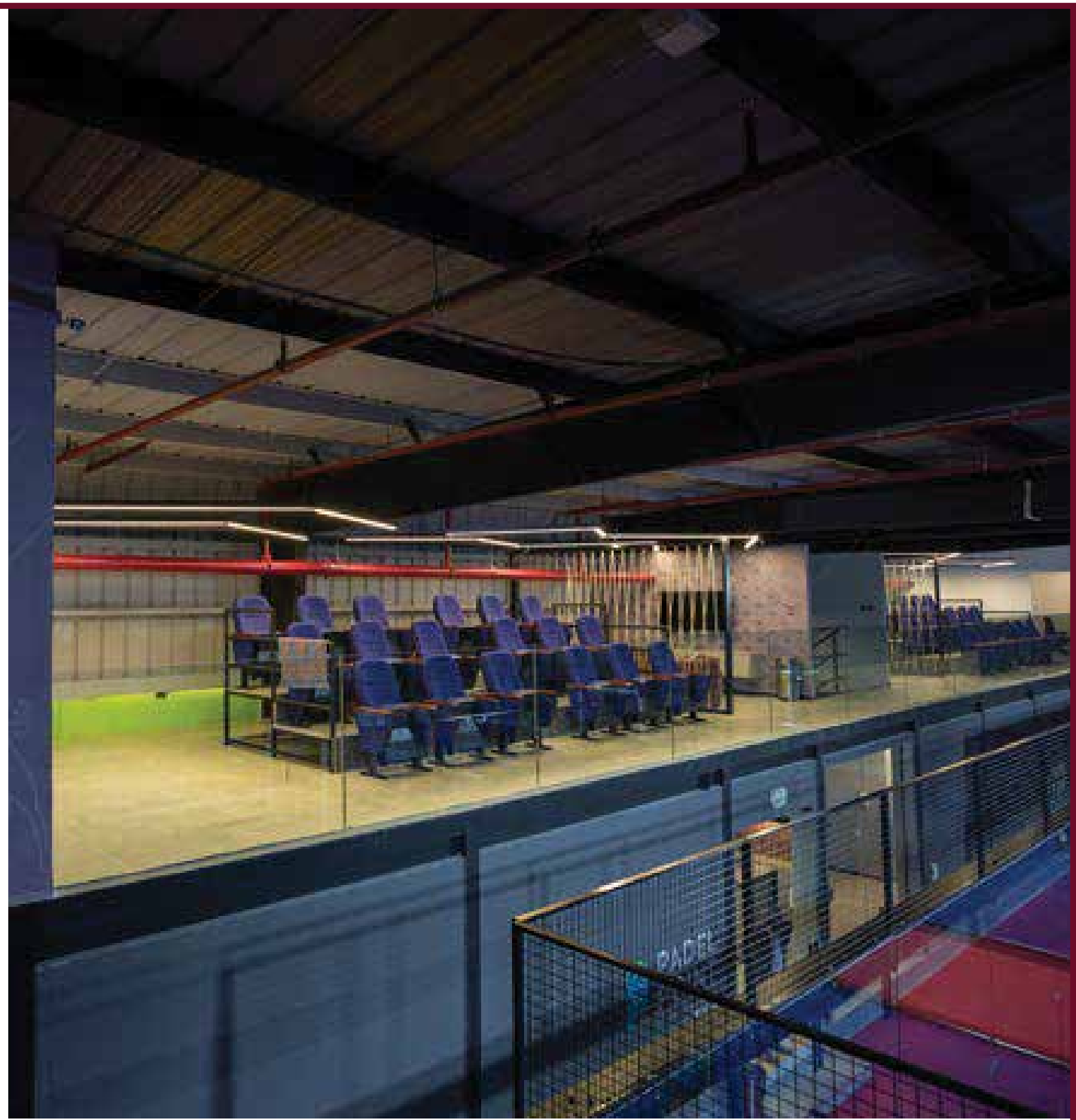
AV & IT Integration

Authority Approvals

ARF SYSTEM

## Duration of Completion

90 Days









# Noblessa Kitchen Showroom

## Client

Al Essa Group

## Area

6800 sq.ft.

## Location

Shaikh Zayed Road, Dubai

## Scope of Work

Design and Build  
Fitout  
MEP Services  
AV & IT Integration  
Civil works  
Authority Approvals

## Duration of Completion

65 Days









# Isculpt Jumeirah

## Client

Isculpt

## Area

3200 sq.ft.

## Location

Jumeirah

## Scope of Work

Design and Build  
Fitout  
MEP Services  
Joinery works  
AV & IT Integration  
Authority Approvals

## Duration of Completion

40 Days





# Adchem Jafza Office

**Client**  
Adchem

**Area**  
9200 sq.ft. (G+1)

**Location**  
JAFZA, Dubai

**Scope of Work**  
Design and Build  
Fitout, Joinery works  
MEP Services  
AV, IT Integration & Accoustics  
VRF System  
Authority Approvals

**Duration of Completion**  
75 Days





# Rheem Innovation Center

## Client

Al Shirawi Group

## Area

5200 sq.ft.

## Location

Dubai Silicon Oasis, Dubai

## Scope of Work

Design and Build  
Fitout  
MEP Services  
Joinery works  
AV & IT Integration  
Authority Approvals

## Duration of Completion

35 Days





# Faham Doors Showroom

## Client

Faham Doors

## Area

6400 sq.ft.

## Location

Shaikh Zayed Road, Dubai

## Scope of Work

Design and Build  
Fitout  
MEP Services  
AV & IT Integration  
Civil works  
Authority Approvals

## Duration of Completion

60 Days









# Ixina Showroom

## Client

Al Essa Group

## Area

7200 sq.ft.

## Location

Deira, Dubai

## Scope of Work

Design and Build

Fitout

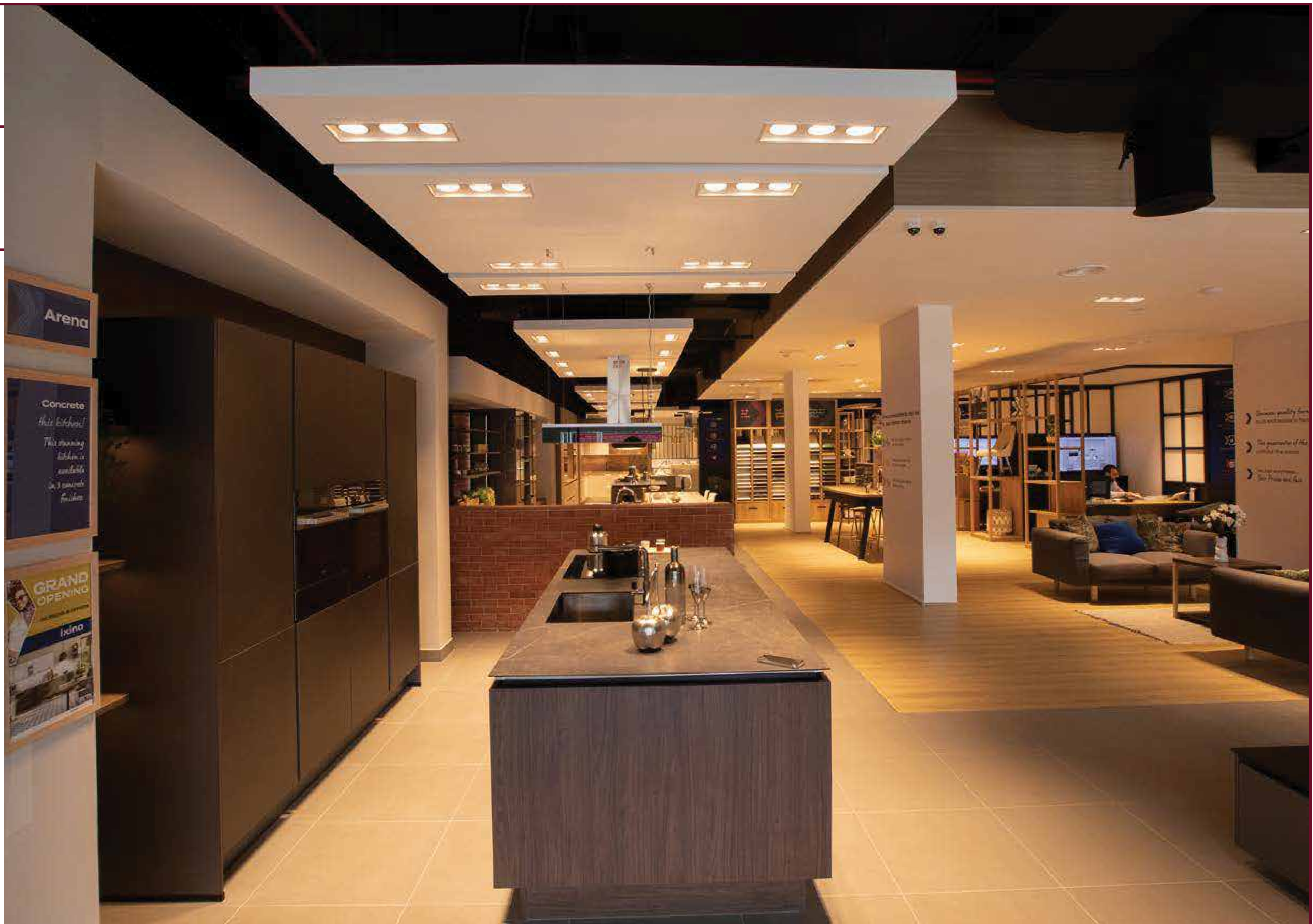
Joinery works

AV & IT Integration

Authority Approvals

## Duration of Completion

60 Days





# Palm Marina Office

## Client

Nakheel

## Area

3200 sq.ft.

## Location

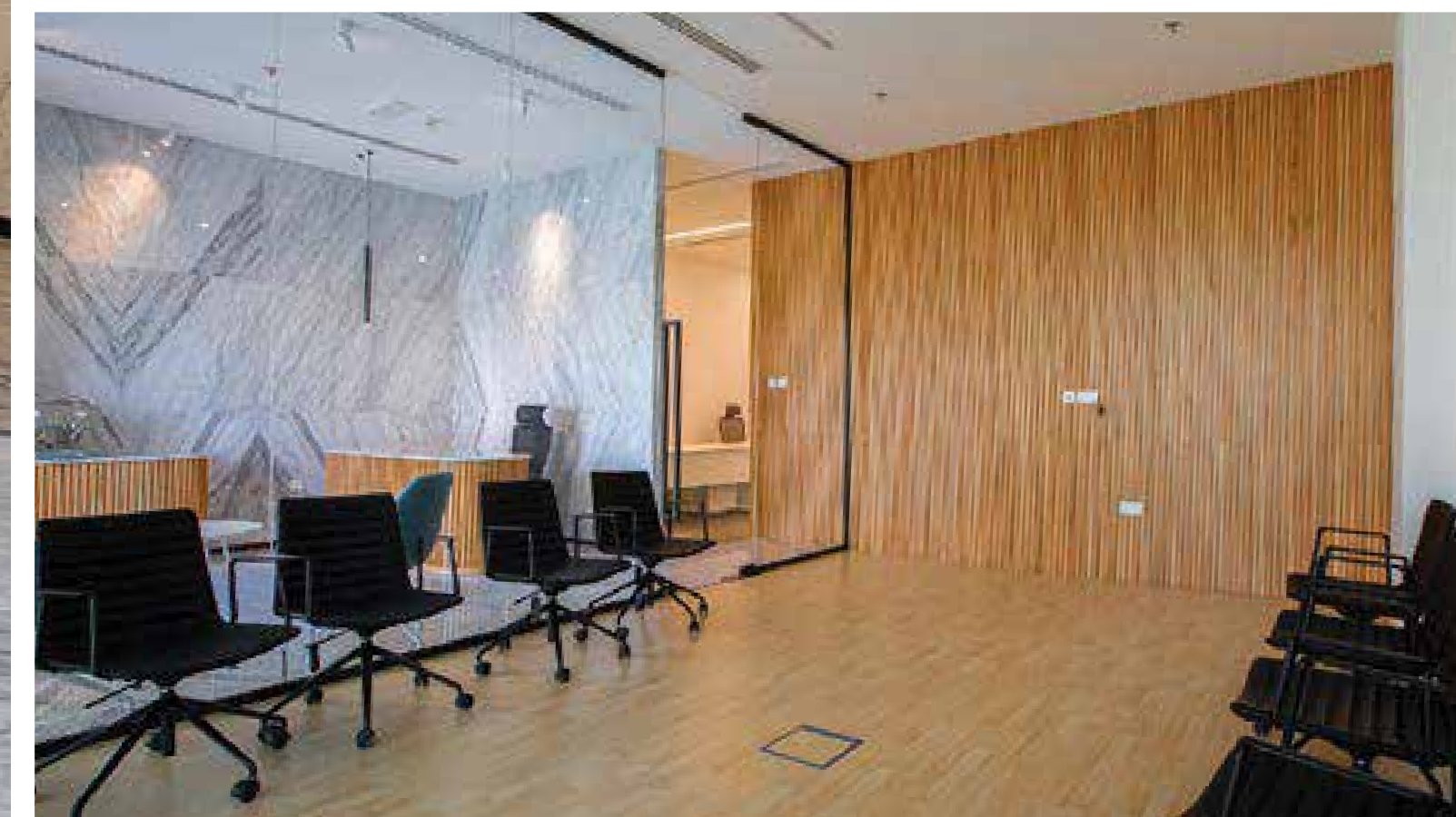
Palm Jumeriah, Dubai

## Scope of Work

Design and Build  
Fitout  
MEP Services  
Joinery works  
AV & IT Integration  
Authority Approvals

## Duration of Completion

30 Days





## SATA Office

### Client

Sharjah Airports

### Area

4800 sq.ft.

### Location

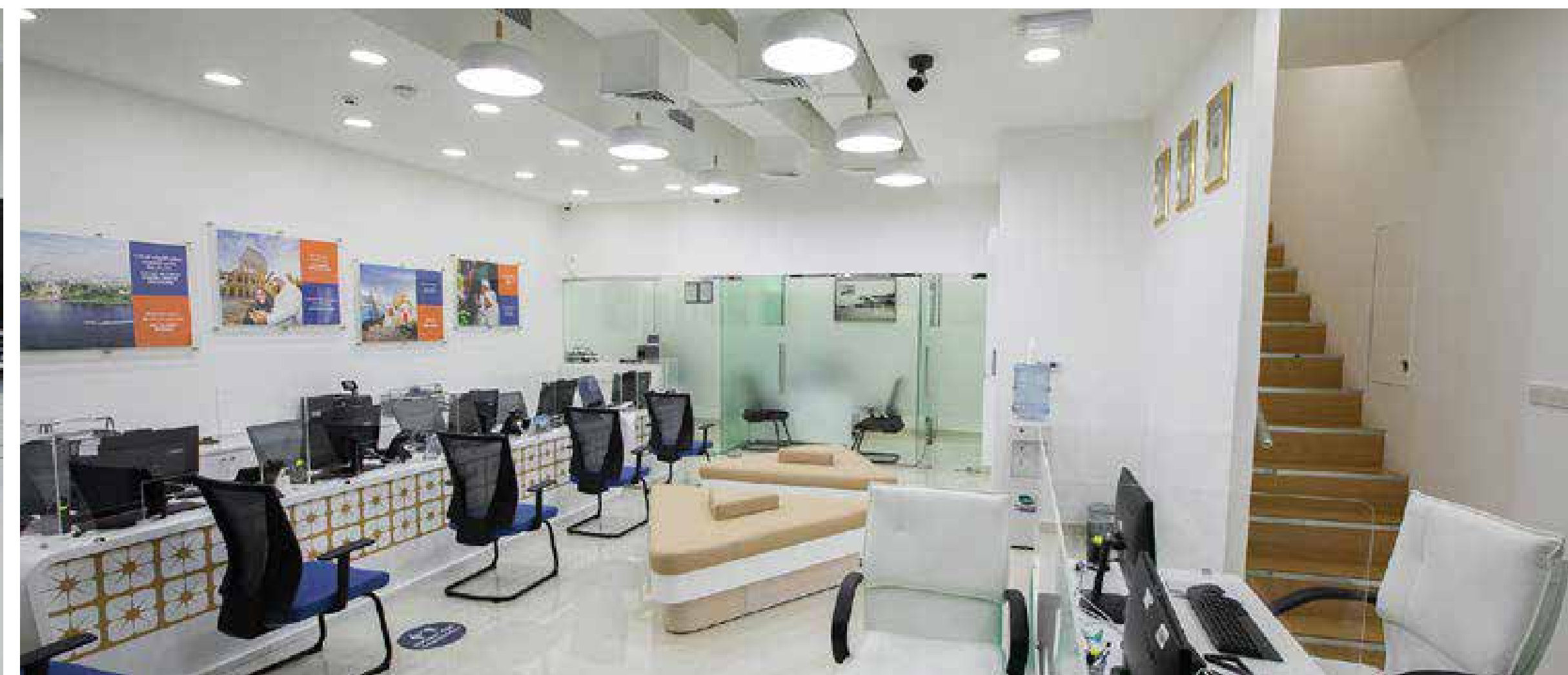
Al Karama, Dubai

### Scope of Work

Design and Build  
Fitout  
MEP Services  
Joinery works  
AV & IT Integration  
Authority Approvals

### Duration of Completion

35 Days





# Abu Dhabi Cricket Stadium VIP Lounge

## Client

Abu Dhabi Cricket Stadium

## Area

11,400 sq.ft.

## Location

Abu Dhabi

## Scope of Work

Design and Build  
Joinery works  
AV & IT Integration  
Furniture, fixtures and equipment  
Authority Approvals

## Duration of Completion

70 Days





# Essa Saleh Al Gurg Tobacco Office

## Client

Easa Saleh Al Gurg Group

## Area

6700 sq.ft.

## Location

Deira, Dubai

## Scope of Work

Design and Build

Fitout

MEP Services

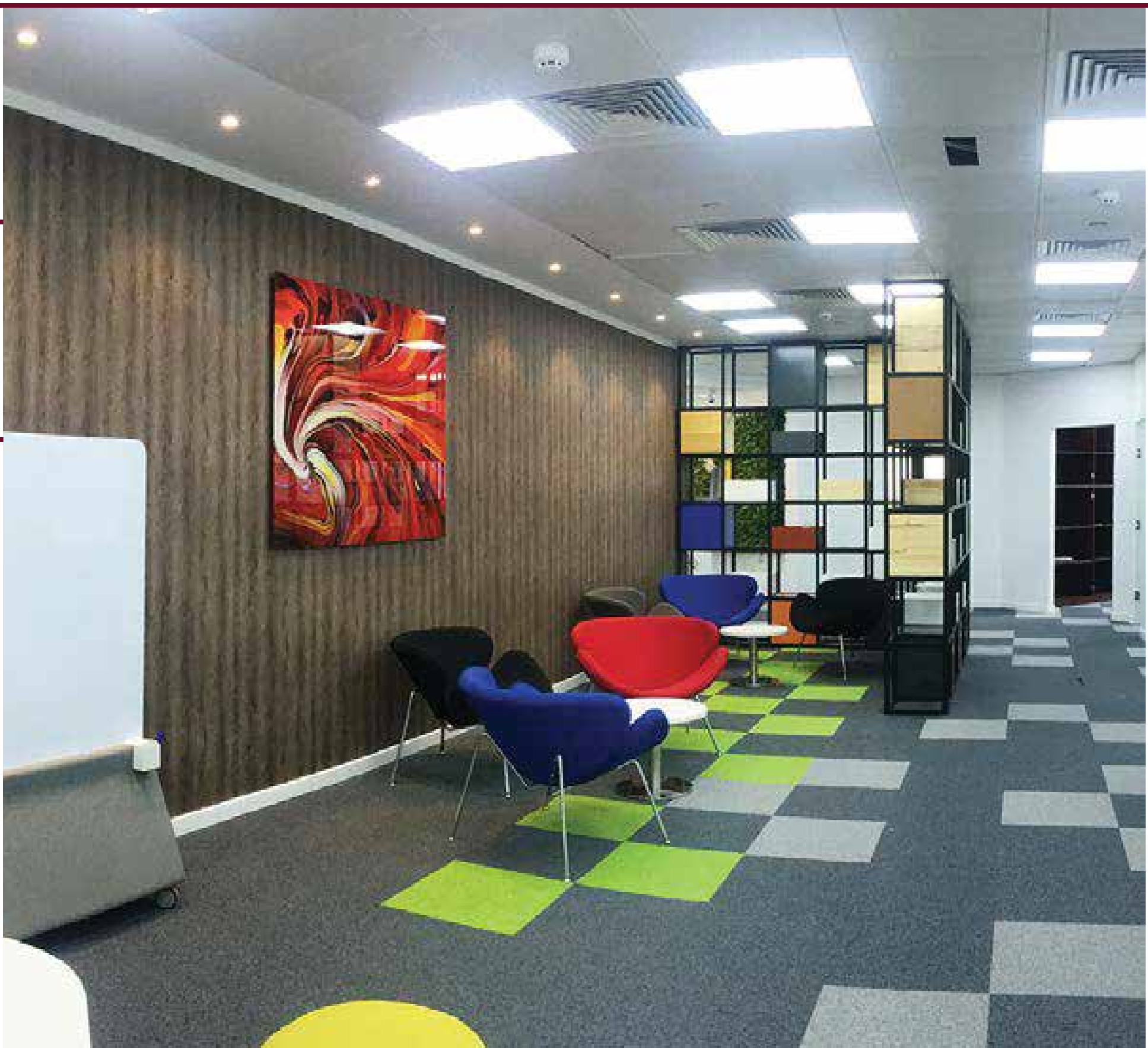
AV & IT Integration

Civil works

Authority Approvals

## Duration of Completion

30 Days

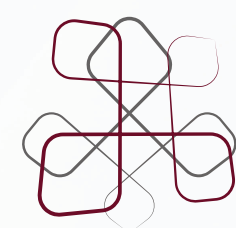




## Our Clients







Tel: +971 4 331 8002  
marketing@livespace.ae  
www.livespace.ae



OUR NETWORK PARTNER SERVICES AROUND THE WORLD