

livespace

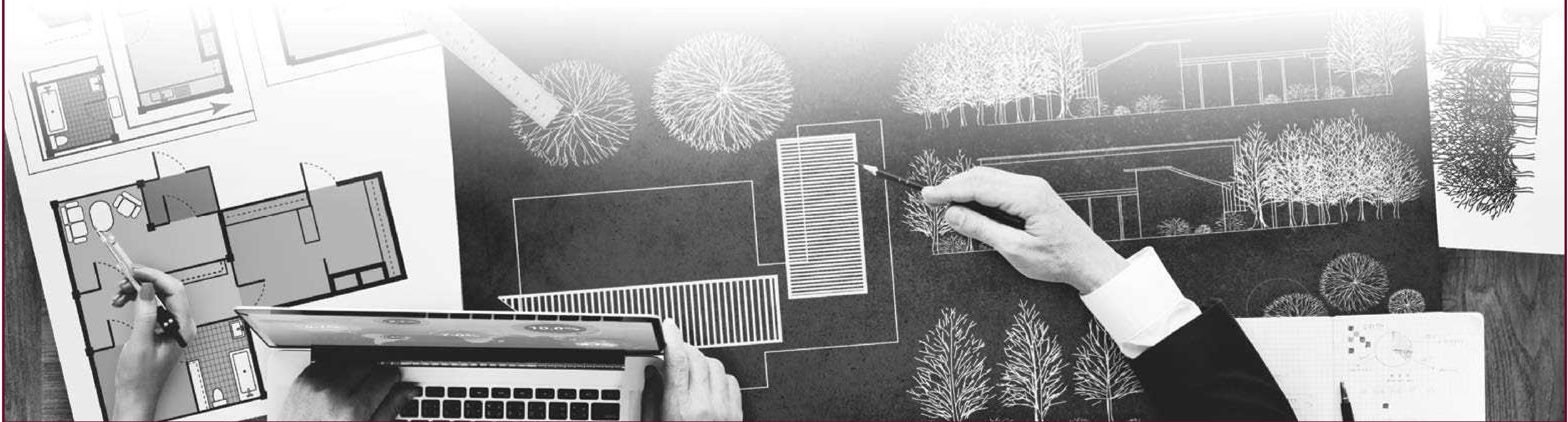
design • build • experience

# Who Are We

LiveSpace is a well established Designing & Manufacturing company specializing in Interior Design, Exhibition Stand Production and Event Production headquartered in Dubai, UAE. With LiveSpace clients can be assured that their orders are processed from start to finish by an experienced team of managers, engineers, supervisors, draftsmen and tradesmen who will deliver to their best.

LiveSpace is bound to become synonymous with commitment and quality. Clients will find a reliable name, keen on living up to professional and international standards, over and above, a company with thorough understanding of the local and international market.

Whether we are working for government institutions, world renowned companies, or delivering ground breaking research and development facilities, our first corporate goal is to provide the best customer experience in our industry before, during, and after project delivery.





# What We Do

Livespace is a design agency with over a decade of international experience in design, luxury fitout, project management and experiential marketing which is split into multiple divisions

## livespace Interiors

- Design & Creation
- Mood Board
- Authority Approval
- Decor
- Value Engineering
- Construction
- MEP Services
- FF&E

## livespace Exhibitions & Events

- Design & Build
- Event Production
- Concept Creation
- Road Show
- Brand Activation
- Mall Activation & Kiosk
- Storage & Rebuild
- Photography & Videography

## livespace Technology

- Interactive Applications
- Digital Retail
- 3D Projection Mapping
- Augmented Reality
- Virtual Reality
- Holographic Technology
- LED Technology
- Content Creation

## livespace Graphics

- 3D Printing
- Advanced Printing Technology
- Digital Signage
- Billboards
- Hoardings
- Light Boxes
- Acrylic Molding
- Popup & Rollup

# Group of Companies





## Major Commercial Projects

S.No.	Project Name	Client
1	Apple Store in Store -The Dubai Mall	Apple
2	Palm Marina Office	Nakheel
3	Abu Dhabi Cricket Stadium VIP Lounge	Abu Dhabi Cricket Stadium
4	SATA Office	Sharjah Airports
5	Arada Sales office -Dubai Festival City Mall	Arada
6	Lock Stock & Barrel - Partial fit-out @ Millenium Hotel	Broadway Interiors
7	Crown & Creek Bar F&B	British Council
8	Flynas Airline Dubai HQ - Emarat Atrium SZR	Flynas Airline
9	Padel Point Consultancy @ Ajman City Center	Padel Point
10	Federal Authority For Identity And Citizenship Ajman	UAE Federal Government
11	Queensland Trade Office-Dubai South HQ	Australian Consulate
12	University of Birmingham Auditorium	University of Birmingham
13	FAM Properties Office	FAM Properties
14	Adchem Jafza Office	Adchem
15	Rheem Innovation Center - DSO LIU	Al Shirawi Group
16	Isculpt Fitness Center - Meyan Mall	Isculpt Fitness
17	Noblessa Kitchen Showroom - Indigo Center Mall	Al Essa Group
18	Audemars Piguet Sales Experience - Al Serkal Avenue	Audemars Piguet
19	Padel Point (Al Quoz, Ras Al Khor & Ras Al Khaimah)	Padel Point
20	Natixis DIFC Office-ICD Brook Field	Natixis Middle East Limited
21	Easa Salah Al Gurg Tobacco Office	Easa Saleh Al Gurg Group
22	Gluckspilz F&B - The Pointe Mall	Gluckspilz
23	Astoria Junction Bar & Restaurant - Astoria Hotel	Private Client
24	CuisinePlus Showroom Abu Dhabi	Al Essa Group
25	Bold Interiors Showroom - Indigo Center Mall	Bold Interiors

### Major Commercial Projects

S.No.	Project Name	Client
26	Tiffany & Co. - Outdoor Sales Experience @ The Address Dubai mall	Tiffany & Co.
27	Delicut @ DIFC Mall	Delicut
28	Coffee Island @ DIFC Mall	Coffee Island
29	Boucheron @ Manarat Al Saadiyat Mall	Boucheron
30	Fujisoft HQ - AW Rostmani Building	Fujisoft
31	Ixina Showroom	Al Essa Group
32	Infosys Dubai HQ	Infosys
33	Easa Saleh Al Gurg Tobacco JAFZA Warehouse	Easa Saleh Al Gurg Group
34	Nolte Kuchen Showroom	Al Essa Group
35	Faham Doors Showroom	Faham Doors
36	Savia Perfume - AW Rostmani Building	Savia Perfume
37	Fractal Systems Innovation Center - IMPZ	Fractal System
38	Indian Embassy Refurbishment	Consulate General of India
39	Canon Showroom - Al Ghazal Mall	Canon
40	Nisnass Sales Experience - Inked dubai	Inked
41	National Bank of Oman	National Bank of Oman
42	The Gift Wrap Boutique - Khawaneej Mall	The Gift Wrap

Our Values





## Our Team

In order to provide you with perfect products, we emphasize the importance of team cohesion. With our profound knowledge gained over the years in the industry, various product manufacturing processes bridged by our professional team are linked and integrated closely and thoroughly. At the same time, we provide our employees with regular and systematic training to further enhance our service quality.

S.No.	Category	Number
1	OFFICE:	
	Project Managers	5
	Sales and Marketing Managers	2
	Design Architects	2
	Estimators	3
	Contract Engineers	3
	Accountants	2
2	INSTALLATION & MAINTAINANCE:	
	Installation Engineers	4
	Installation Supervisors	8
	Drivers	3
3	FACTORY:	
	Finishing Carpenters - Plan	20
	Finishing Carpenters - Installation	16
	Joiners	10
	Spray Painters & Polishers	6
	Charge Hand	8
	Machine Operators	7
	Helpers	15
	Mechanics & Electricians	6



Office

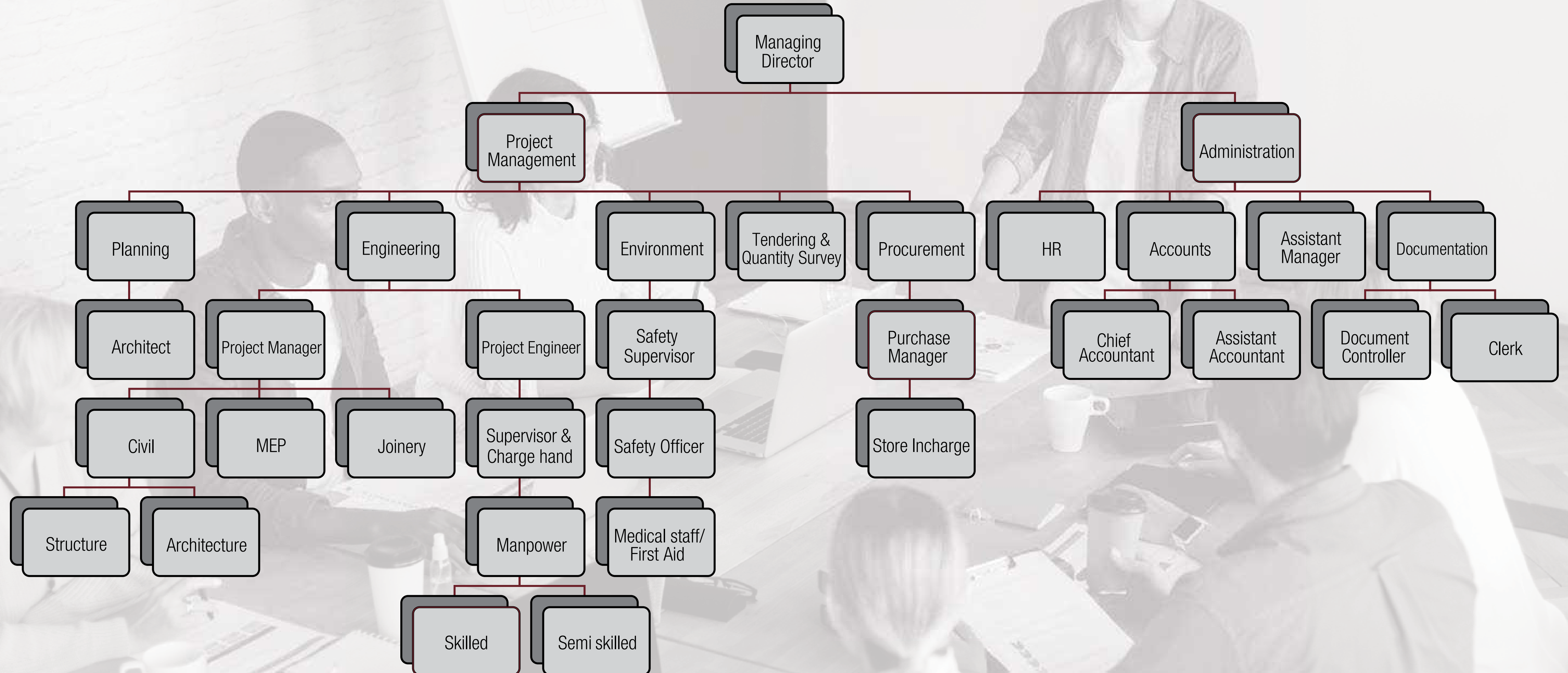
32

Factory

88



# Company Structure



# Health, Safety & Environment

Health, safety and environment (HSE) management ensure the health and safety of our workers and compliance with HSE construction requirements.

LiveSpace is committed to the safety of employees, contractors and the general public. We recognize that providing and integrating a sound environmental, health and safety program into our business is key to our success.

This is critical to our business success because it allows us to systematically minimize all losses and adds value for all our stakeholders.





# Production Unit

LiveSpace has advanced equipment from Germany, Italy and Taiwan. Its main equipment includes CNC routers, wood laminate machine, edge bonding machine, automatic drilling machine, automatic shear and joint machine, four side planers, copying lathe, precisising sawing and docking machine, laser cutting machine, glass cutting and polishing machine, glass tempering machine and painting booths. The factory is completely equipped to ensure to provide high quality products and improved efficiency.



## Area We Cover

Offices | Retail showrooms | Warehouses  
Hotels | Schools | Residential





# Our Expertise

## Design & Solution

When it comes to professional and high-quality fit out and shop fitting services, we are unparalleled. Our track record reveals broader experience across a wider range of sectors, geographies and projects. From major office fit outs to large-scale global retail rollout programs we have delivered environments vital to our client's business operations and highly responsive to their evolving industries. Our full design and fit out service includes pre-event planning, such as design brief development, concept design, space planning, production of CAD plans, 3D renders, concept boards, working drawings and tender specifications. Our dedicated production department will then bring the designs to life; fitting out your interior and adding finishing touches like florals and décor.



## Exhibitions

Our expertise for exhibition stands runs far beyond design and build. We provide turnkey solutions for exhibitions, guiding our clients from initial concept, right through to delivery and execution. Working at every level of the exhibition process in this way gives us a unique insight into what it takes to create and run successful exhibition stands - so we're best placed to help you find the positives and avoid the pitfalls.

# Our Expertise

## Technology

We offer unique user experiences that are innovative yet natural, intuitive and easy to use. We create experiences that break down barriers and seamlessly merge the physical with the digital world. Our main products consist of end to end Multitouch, Gesture, 3D projection, Home automation, Projection Mapping, Advanced display & Hologram solutions. Since, experiences span across platforms, we also develop custom software solutions to further enhance the user experience.



## Aluminum & Glass

LiveSpace is passionately engaged in offering an exclusive array of Aluminum framed toughened glass. These products are made from high quality components providing a wide range of products which offer an excellent quality. Staying with the quality oriented approach towards our production we can supply a comprehensive assortment of Aluminum track sliding window glass. We provide windows glass in different customized options to meet our customers diverse needs.



## Portfolio Highlights



# BOLD Interiors

## Client

Bold Interiors

## Area

5300 sq.ft.

## Location

Sheikh Zayed Rd, Dubai

## Scope of Work

Design and Build  
Fitout  
MEP Services  
Joinery works  
AV & IT Integration  
Authority Approvals

## Duration of Completion

45 Days





# Nolte Kuchen Showroom

## Client

Universal Group Holding

## Area

5200 sq.ft.

## Location

Shaikh Zayed Road, Dubai

## Scope of Work

Design and Build  
Fitout  
MEP Services  
AV & IT Integration  
Civil works  
Authority Approvals

## Duration of Completion

60 Days





# Apple Store in Store

## Client

Apple

## Area

1000 sq .ft

## Location

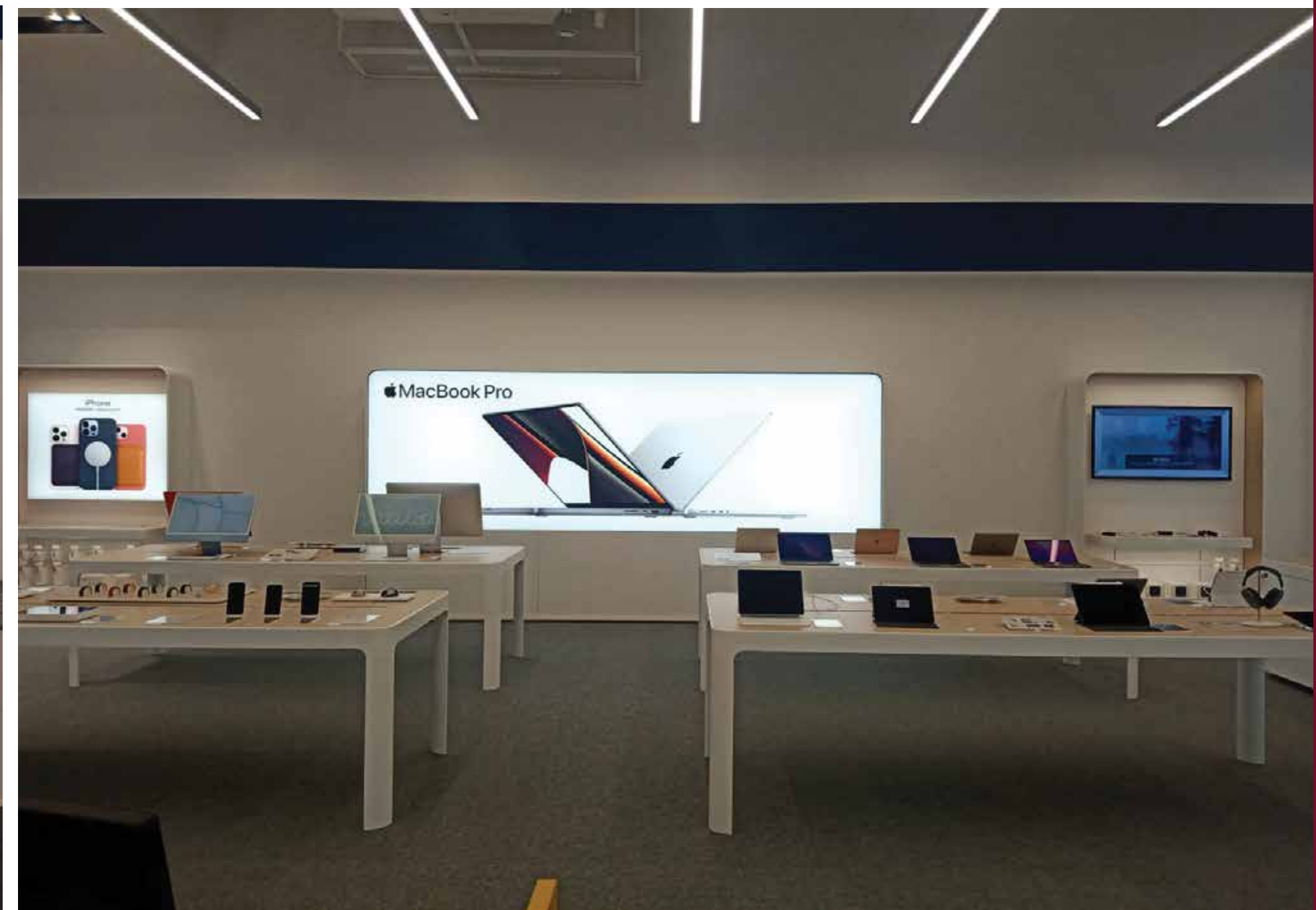
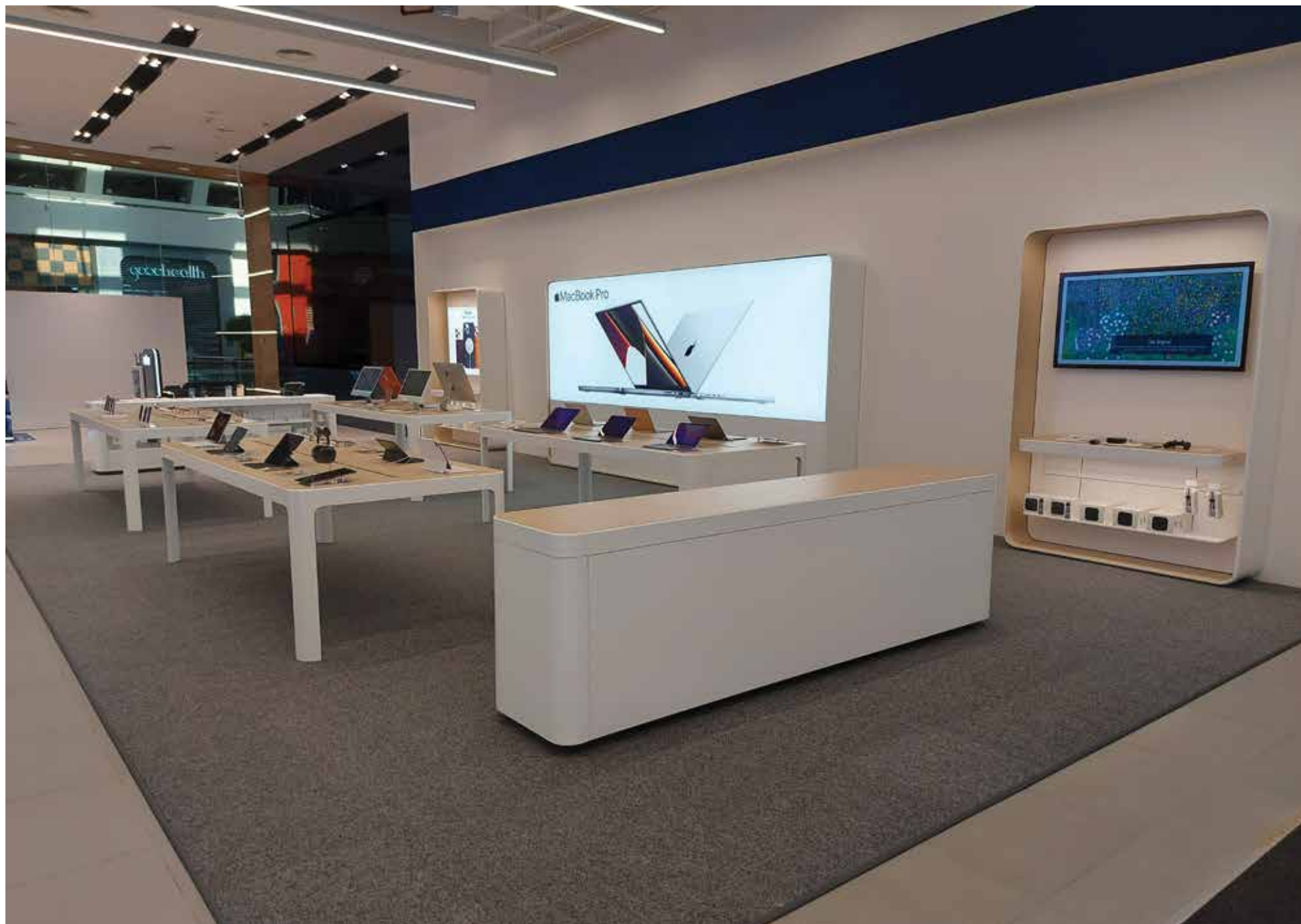
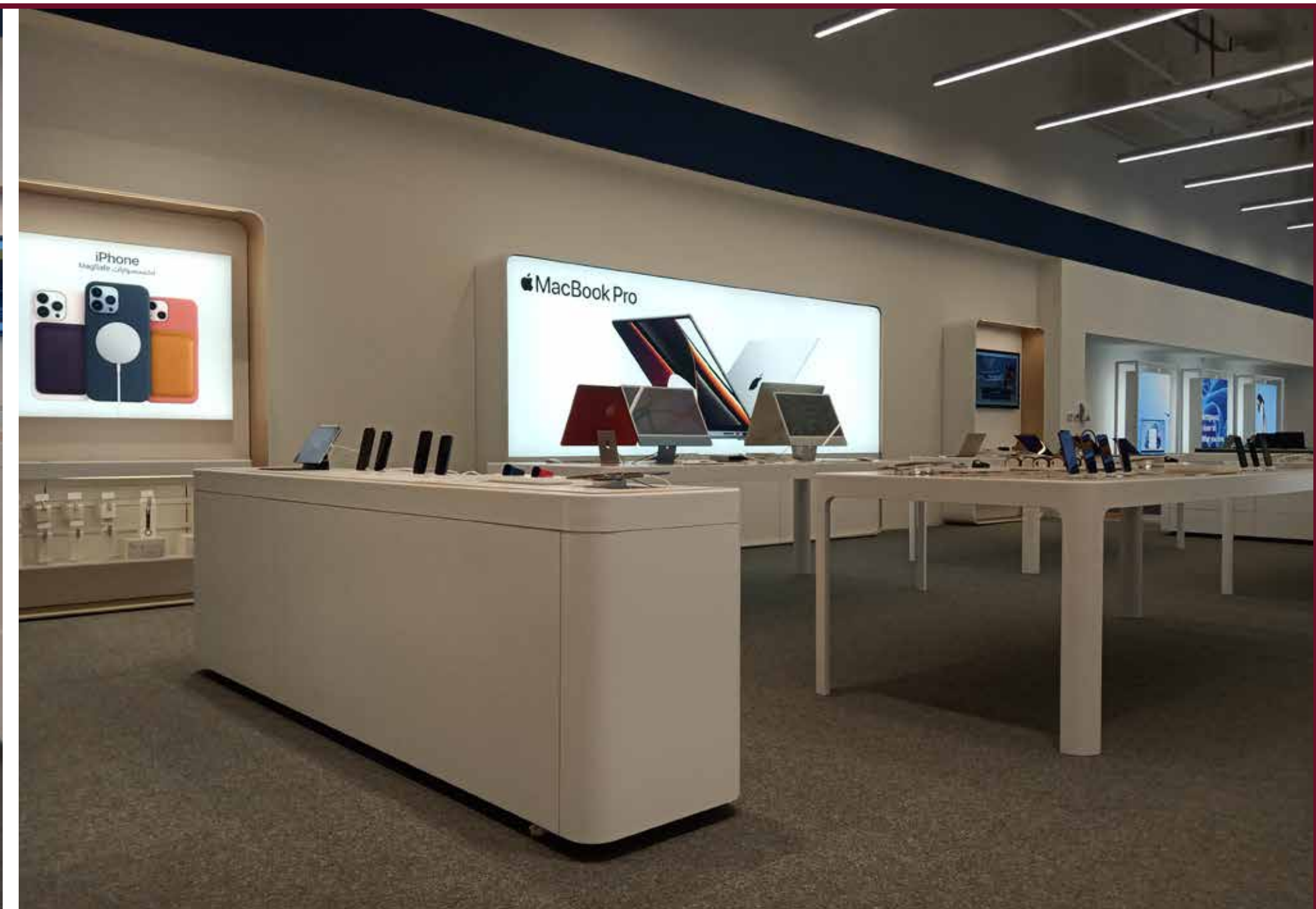
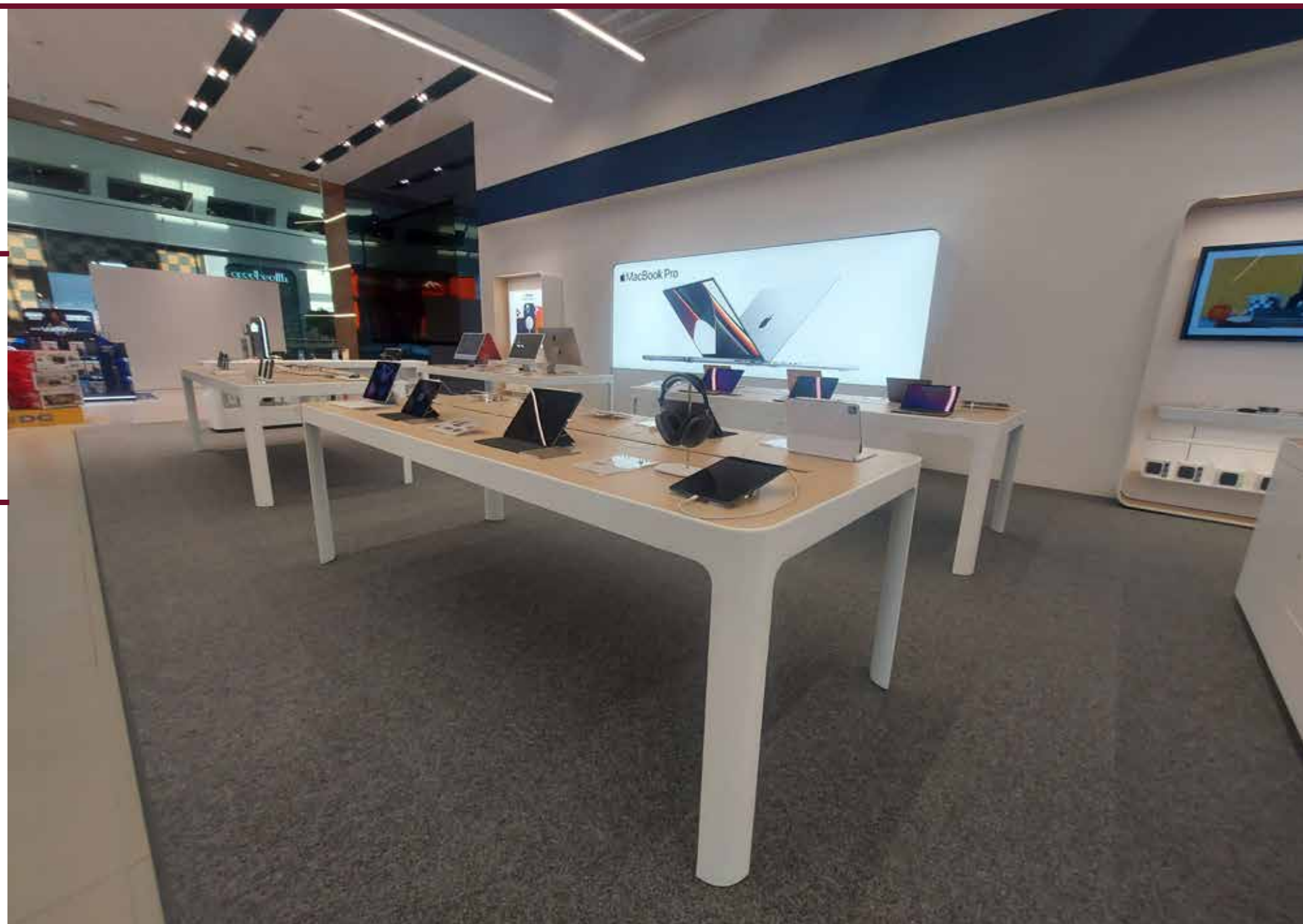
The Dubai Mall, Dubai

## Scope of Work

Build  
Fitout  
MEP Services  
AV & IT Integration  
Authority Approvals

## Duration of Completion

7 Days





# Savia Perfumes

## Client

Savia Perfumes

## Area

8500 sq.ft.

## Location

Burjuman, Dubai

## Scope of Work

Design and Build

Fitout

MEP Services

Joinery works

AV & IT Integration

Authority Approvals

## Duration of Completion





# Cuisine Plus Showroom

## Client

Al Essa Group

## Area

8900 sq.ft.

## Location

Abu Dhabi

## Scope of Work

Design and Build  
Fitout  
MEP Services  
AV & IT Integration  
Civil works  
Authority Approvals

## Duration of Completion

60 Days





# GLÜCKSPILZ The Pointe

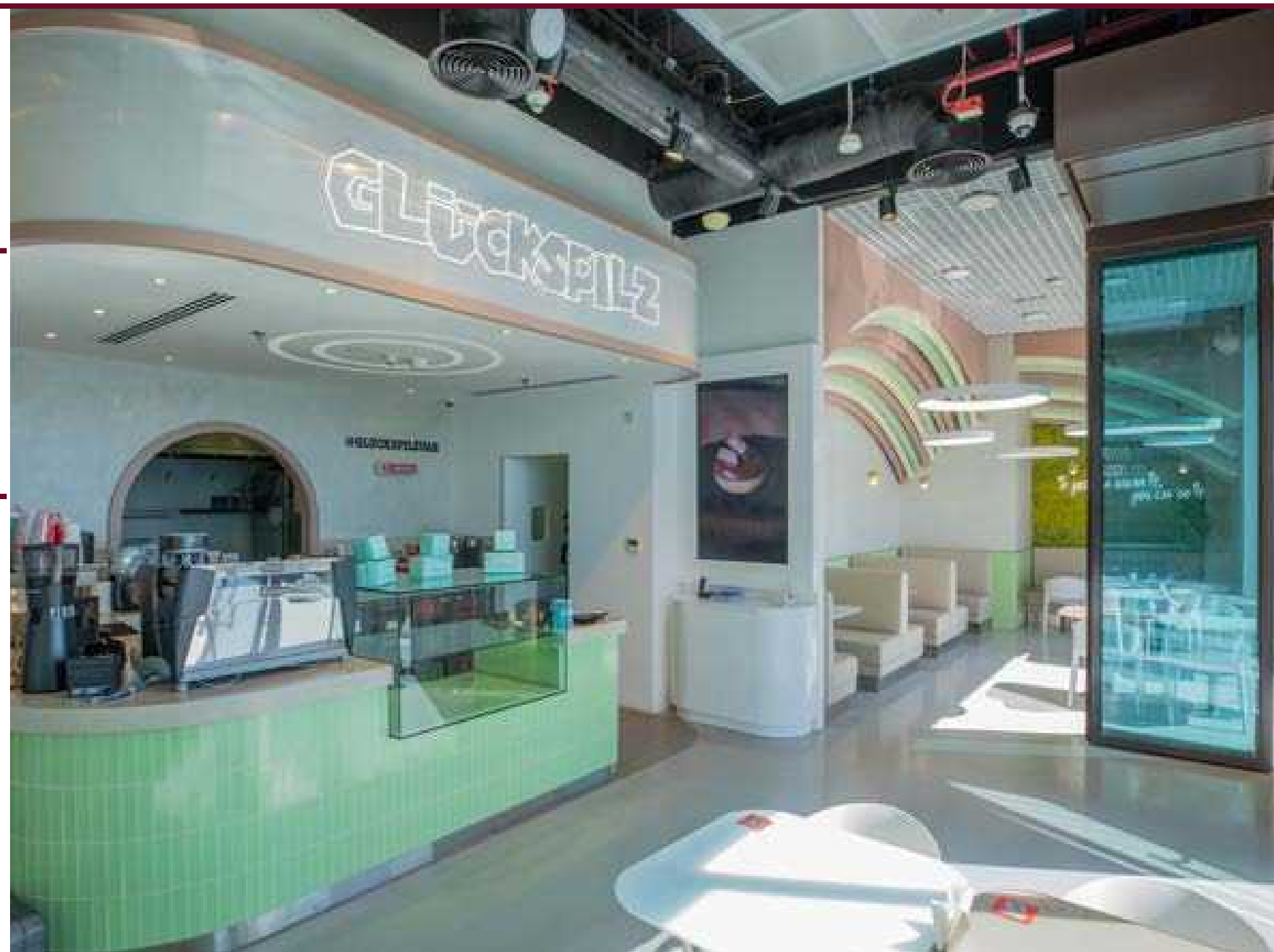
**Client**  
GLÜCKSPILZ

**Area**  
4300 sq.ft.

**Location**  
The Palm Jumeirah

**Scope of Work**  
Design and Build  
Fitout  
MEP Services  
Joinery works  
AV & IT Integration  
Authority Approvals

**Duration of Completion**  
45 Days





## Our Clients





